

## Application Requirements (to be sent to PhORCAS)

Application Deadline: January 15

Letter of Intent

Curriculum Vitae

College/School of Pharmacy Transcript

Three Letters of Recommendation

On-site Interview

Enrolled in or Successful Completion of an Accredited PGY1 Pharmacy Residency

Ability to Obtain Licensure in the State of Florida

### Benefits

Salary: ~ \$47,500 (subject to change)

Vacation/Sick: Ten days (7 vacation/3 sick) in addition to NSU school holidays

Professional leave: To attend meetings and educational conferences

Medical, dental, vision, life insurance, disability, 401K

Travel compensation for national conferences

### Contact Information

#### **Tina Joseph, PharmD, BCACP**

Residency Program Director, PGY2 Ambulatory Care

Assistant Professor of Pharmacy Practice

Nova Southeastern University College of Pharmacy

3200 South University Drive, Fort Lauderdale, FL 33328

Email: [tjoseph1@nova.edu](mailto:tjoseph1@nova.edu)

Phone: 954-262-1362

Fax: 954-262-2278

Website: <http://pharmacy.nova.edu/graduate/residencies.html>



# PGY2 Ambulatory Care Residency

## Program Purpose

The PGY2 Residency Program in Ambulatory Care at Nova Southeastern University College of Pharmacy (NSUCOP) is designed to produce a proficient ambulatory care pharmacist able to function independently and collaboratively with other health care providers to improve the overall care for individuals with chronic disease states. Residents will work closely with pharmacy faculty within the Accountable Care Organization Research Network, Services, and Education (ACORN SEED).

NSUCOP and their faculty sites provide the unique experiences in direct patient care, didactic and experiential education, development and implementation of research. This PGY2 program will prepare residents to practice in a mixture of pharmacist-led and interdisciplinary patient visits. Residents will have a strong teaching focus throughout the year. Graduates will be prepared to sit for the Board Certification exam in Ambulatory Care.

Residents will be prepared to assume positions as an assistant professor for a college of pharmacy or ambulatory care clinical specialist. Graduates of this program will be prepared for innovative models for healthcare reimbursement, create services in the outpatient setting, and become leaders in ambulatory care.



## Clinical Rotations

### Core Experiences

Orientation -1 month

Pharmacotherapy I (General Ambulatory Care)- 2 months

Pharmacotherapy II (DM and TOC focus)- 2 months

Outpatient Cardiology – 2 months

Chronic Care Management Home Visits- 2 months

Piloting Pharmacy Services in ACO Offices- 1 month

Management and Leadership (Longitudinal)

Academia (Longitudinal)

Research (Longitudinal)

### Elective Experiences (1 month)

Academia (Administrative focus)

Adherence, Transitions of Care, Medication Therapy Management (ATM) Call Center

## Teaching Opportunities

Precepting Doctor of Pharmacy students

Facilitate patient-care management lab

Facilitate group discussions

Provide didactic lectures

Teaching Certificate Program (ITALICSRx)

Continuing education for faculty/healthcare providers

## MEET THE PRECEPTORS

### **Tina Joseph, PharmD, BCACP** **Residency Program Director**

Preceptor: Orientation, Pharmacotherapy I (General Ambulatory Care), Management and Leadership, Chronic Care Management Home Visits



*Dr. Joseph is an Assistant Professor of Pharmacy Practice Nova Southeastern University College of Pharmacy (NSUCOP) in Fort Lauderdale, FL where she focuses on ambulatory care. Dr. Joseph earned a Doctorate in Pharmacy from St. John's University College of Pharmacy in Queens, NY. She then completed a PGY1 residency at Long Island Jewish Medical Center in New Hyde Park, NY and a PGY2 Ambulatory*

*Care Residency at The Brooklyn Hospital Center in Brooklyn, NY. Her practice site is located at Cambridge Medical Group in Boynton Beach, FL, a primary care physicians' office within an Accountable Care Organization (ACO). Dr. Joseph is an integral member of the ACO Research Network Services and Education (ACORN SEED) team focusing on integrating pharmacists in value-based care models.*

### **Cynthia Moreau, PharmD, BCACP**

Preceptor: Pharmacotherapy II (DM and TOC focus)

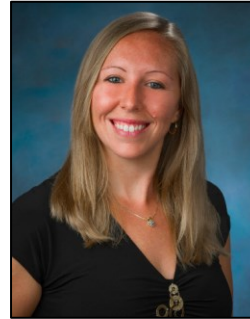


*Dr. Moreau joined the faculty as Assistant Professor in the Department of Pharmacy Practice at NSUCOP in August 2016. She received her PharmD from the University of Florida College of Pharmacy in 2014. Following graduation, she completed a PGY1 Pharmacy Practice residency with an emphasis in ambulatory care at Florida Hospital Celebration Health and a PGY2 Ambulatory Care residency at the University of Florida College of*

*Pharmacy/UF Health Family Medicine. Dr. Moreau is working as part of the NSUCOP ACORN SEED team, which is working to expand clinical pharmacy services within accountable care organizations in the South Florida region. Her primary practice site is Columbia Medical Group in Greenacres, FL.*

### **Genevieve M. Hale, PharmD, BCPS**

Preceptor: Outpatient Cardiology, Research



*Dr. Genevieve Hale is currently an Assistant Professor in the Department of Pharmacy Practice and Vice Chair at NSUCOP Palm Beach Gardens campus. Following graduation from NSU in 2013, she completed a one-year pharmacy practice resident at the University of Pittsburgh Medical Center (UPMC) Presbyterian Hospital in Pittsburgh, Pennsylvania, and second year residency specializing in cardiovascular diseases at the Ann Arbor Veterans' Affairs Hospital in Ann*

*Arbor, Michigan. Dr. Hale currently practices at Dr. Martha M. Rodriguez Internal Medicine Clinic in Boynton Beach, FL focusing on cardiovascular disease management and proud member of ACORNSEED (ACO Research Network, Services, and Education).*

### **Jennifer Steinberg, PharmD, BCPS**

Preceptor: Academia



*Dr. Steinberg received her Doctor of Pharmacy degree from the University of Florida. She then completed a PGY-1 Pharmacy Practice residency at Baptist Hospital of Miami and Nova Southeastern University. Following her work as a Clinical Pharmacy Specialist at the Baptist Cardiac and Vascular Institute, she returned to complete a PGY-2 specialty residency in Critical Care, also at Baptist Hospital. Dr. Steinberg received Board Certification in Pharmacotherapy in 2009. Dr. Steinberg is Director of Experiential Education*

*at Nova Southeastern University College of Pharmacy focusing on Introductory Pharmacy Practice Experiences. She is also an Assistant Professor in Pharmacy Practice where she teaches in the Pharmacotherapy course series. Dr. Steinberg is also a contributor to the ASHP book *Get the Residency*. Her areas of interest include Experiential Education, cardiovascular disease, and anticoagulation.*